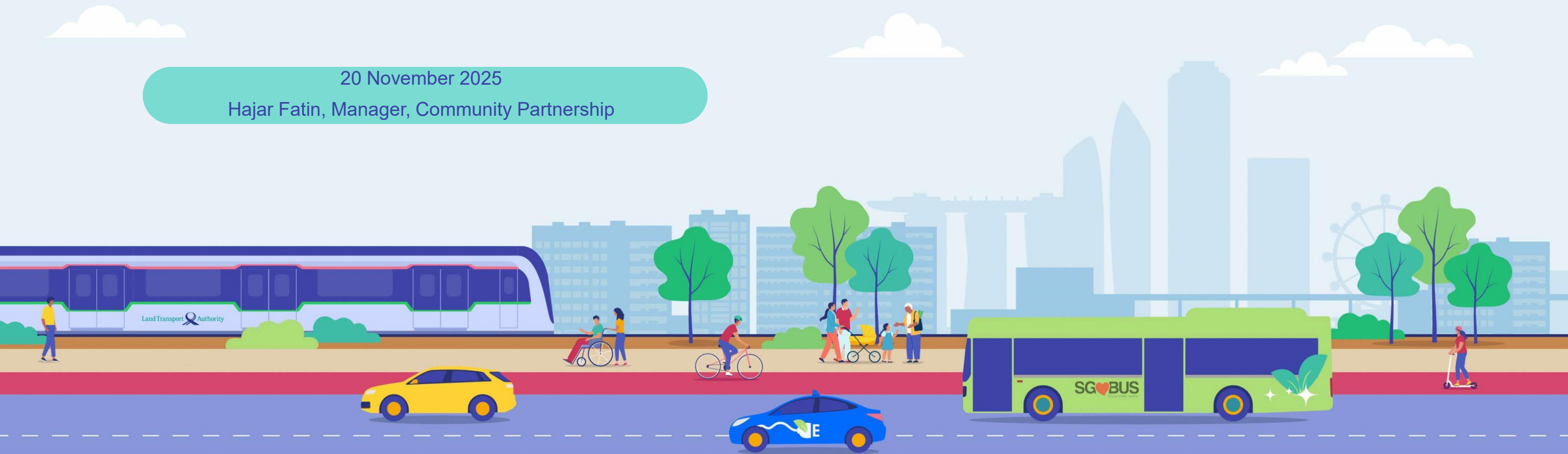


A Safer Journey to School

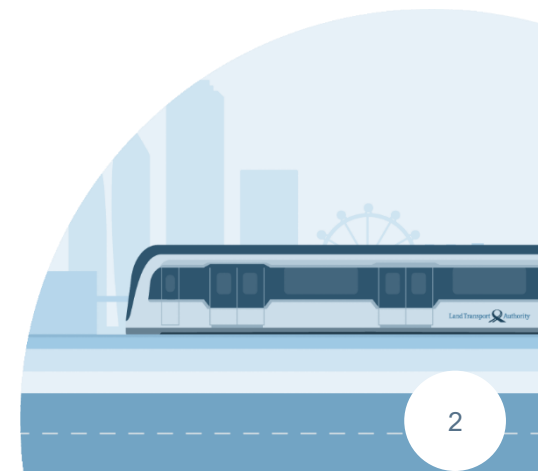
20 November 2025

Hajar Fatin, Manager, Community Partnership



Content

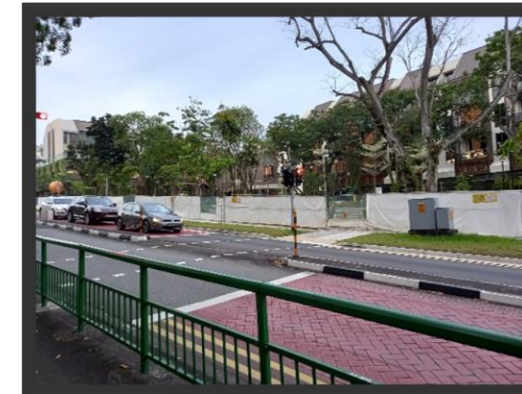
- **Current Road Layout and School Zone Signage**
- **Adopting a Safe and Considerate Parking Around the School**
- **Traffic and Parking Guidelines Around the School Vicinity**
- **How Can You Help**
- **Traffic Offences**
- **Reminder**



Current Road Layout and School Zone Signage



- ✓ Red patches to indicate school zone.
- ✓ School zone signage with 40kmph speed limit.
- ✓ Road markings to alert motorists of humps along Holland Grove Road.
- ✓ Hump & SLOW signages.
- ✓ Signalised pedestrian crossing along Holland Grove Road.
- ✓ Zebra crossing along Mount Sinai Road with signages to alert students to look out for traffic as part of “safe route to school” initiative.

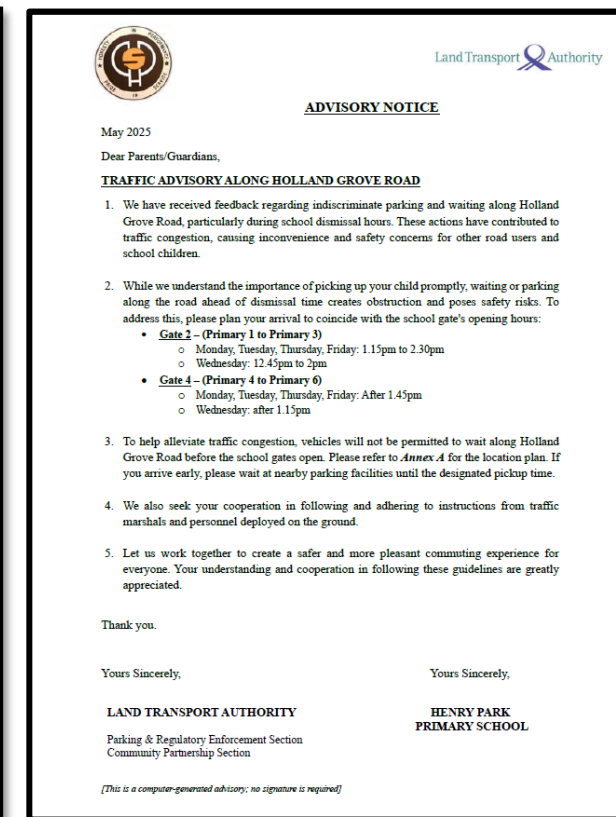
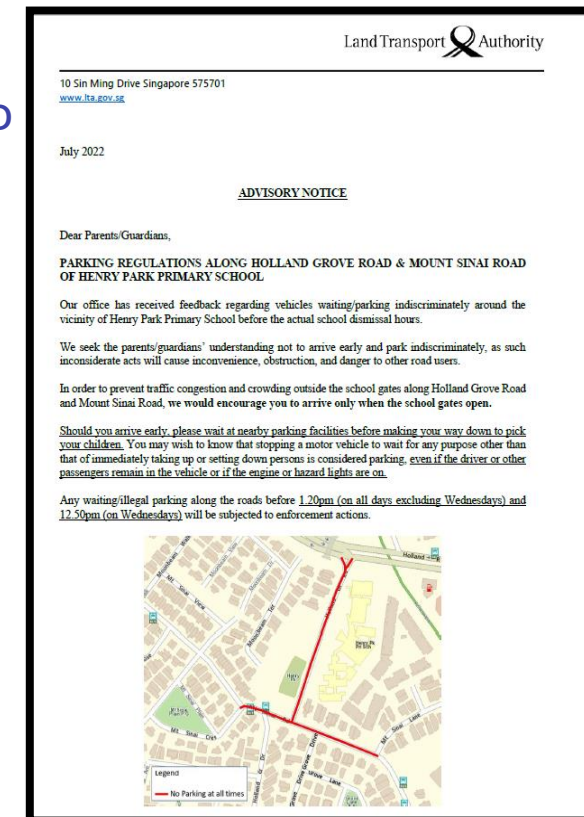


Adopting a Safe and Considerate Parking Around the School

- ✓ To prevent traffic congestion and crowding outside the school gates, we encourage you to arrive only when the school gates open.
- ✓ Motorists who arrive early are advised to park their vehicles at designated parking areas and wait there. Illegal parking in the vicinity may lead to significant traffic congestion and compromise the safety of other road users.
- ✓ Any waiting/illegal parking along the roads for Gate 2 (Primary 1 to Primary 3), before 1.15pm (Mondays, Tuesdays, Thursdays, Fridays) and 12.45pm (Wednesdays) will be **subjected to LTA enforcement actions.**
- ✓ Join Advisory notices were also issued out to parents/guardians on the parking regulations along Holland Grove Road near the school.

- ✓ For the safety of the members of public, we would like to urge all drivers to exercise care and consideration by not parking at these critical areas:

- 3 metres within a fire-hydrant
- 6 metres within a junction
- Single white zig-zag line (zebra-controlled zone)
- Double yellow lines
- On grass verge and footpaths
- At entrances or exits of any other premises
- Abreast of another vehicle (double parking)



Traffic and Parking Guidelines Around the School Vicinity

- ✓ Adhere to the flow of traffic.
- ✓ Do not Park along:
 - Holland Grove Road and Mount Sinai Road
- ✓ Do not park abreast near the school gate during dismissal hours.
- ✓ Report illegal parking through the LTA OneMotoring website.
- ✓ Please make use of Public Transport i.e. Buses Services: 7, 61, 75, 92, 156, 165
 - *Use the MyTransport.SG App to plan your journey*



**Scan the QR code to download
the MyTransport.SG App →**



How Can You Help?

- ✓ To help alleviate traffic congestion, if you arrive early, please wait at nearby parking facilities until the designated pickup time.
- ✓ We also seek your cooperation in following and adhering to instructions from traffic marshals and personnel deployed on the ground.
- ✓ Let us work together to create a safer and more pleasant commuting experience for everyone. Your understanding and cooperation in following these guidelines are greatly appreciated.



Unbroken Double Yellow Lines

Classification of Vehicles

- Light Vehicles
- Heavy Vehicle

No parking at all times on this road

Immediate loading/unloading permitted

No waiting

Types of Offences

- Offence Lines
- Offence Signs
- 3, 6, 9 Rules

Light Vehicle

\$70.00

Heavy Vehicle

\$100.00



Opposite Single Continuous White Line

Classification of Vehicles

- Light Vehicles
- Heavy Vehicle

No parking at all times on this road

Immediate loading/unloading permitted

No waiting

Types of Offences

- Offence Lines
- Offence Signs
- 3, 6, 9 Rules

Light Vehicle

\$70.00

Heavy Vehicle

\$100.00



Zebra Controlled Zone

Classification of Vehicles

- Light Vehicles
- Heavy Vehicle

Types of Offences

- Offence Lines
- Offence Signs
- 3, 6, 9 Rules

Light Vehicle

\$120.00

Heavy Vehicle

\$150.00

Demerit
Points

3

No stopping at all times on the road

Any vehicles stopping at such a location (other than waiting for traffic light to turn green or being block by another car or giving way to pedestrians) can be issued a Notice of Parking Offence.



Unbroken Single Yellow Line

Classification of Vehicles

- Light Vehicles
- Heavy Vehicle

Types of Offences

- Offence Lines
- Offence Signs
- 3, 6, 9 Rules

Light Vehicle

\$70.00

Heavy Vehicle

\$100.00

Vehicles are not allowed to park from 7.00 AM to 7.00 PM

Vehicles can be parked from 7.00 PM to 7.00 AM on weekdays and Saturdays; and whole day on public holidays and Sundays

Immediate loading/unloading permitted at all times



6m of Junction

Classification of Vehicles

- Light Vehicles
- Heavy Vehicle

Types of Offences

- Offence Lines
- Offence Signs
- 3, 6, 9 Rules

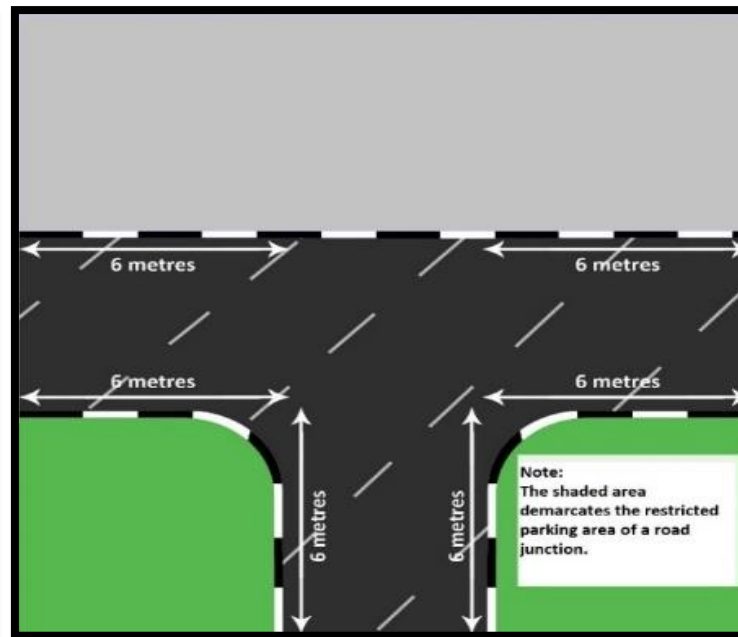
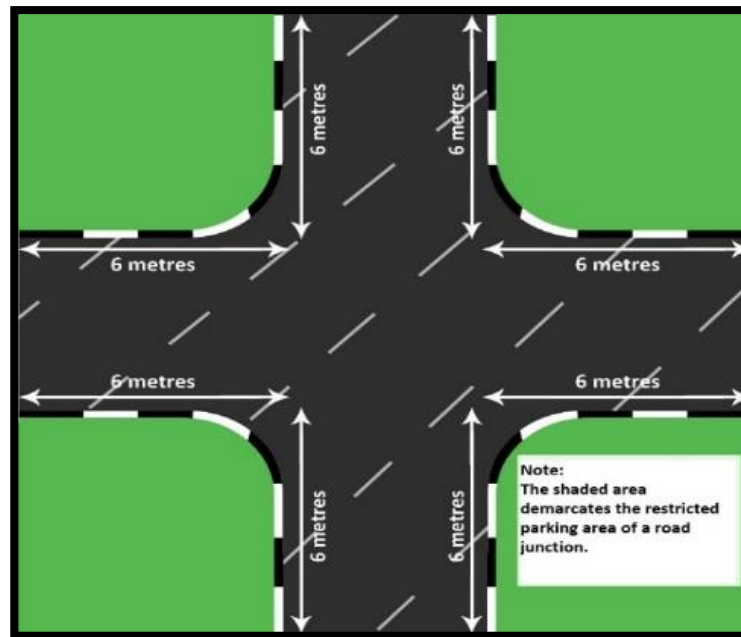
Light Vehicle

\$70.00

Heavy Vehicle

\$100.00

No parking at all times within 6 metres of an intersection or junction of any road or street



Reminder

According to The Road Traffic Rules (r.22), no person shall park a vehicle marked with infringement lines, such as double-yellow or single continuous white lines and at any *critical areas

It is the responsibility of all motorists to comply with these rules. Any vehicles parked roads may be subject to enforcement action

LTA does not tolerate illegal or indiscriminate parking on any public roads marked with infringement lines or at critical areas, for the safety of all.

**Critical areas: 9m bus stop, 6m junction, 3m fire hydrant*



www.lta.gov.sg



WeKeepYourWorldMoving



LTAsg



LTAsingapore



Thank you!

